

2019



**SPC INDUSTRIAL™**

**Product Guide:**  
Material Handling

## WE ARE **SPC INDUSTRIAL™**

SPC Industrial™ is a family owned and operated, Michigan based company with more than 30 years experience designing and manufacturing **Ergonomic, Safety, and Material Handling products** for industry. Our products are made from recycled plastic and built around a patented, **easy, no-tool, modular system** and are distributed through the world's leading industrial supply catalogs and a network of distributors and specialty industrial manufacturing representative companies. SPC Industrial™ serves a global market of companies and provides a personal level of service that exceeds expectations and **delivers results for industry.**

## MEET YOUR **ACCOUNT MANAGER**



CJ has more than 10 years experience in sales, marketing, advertising, safety, and chemical manufacturing. Throughout his professional career he has worked with the Federal Bureau of Investigation and National Institute of Health on the development of high priority projects. CJ's diverse background, experience, impeccable listening skills, and keen attention to detail equip him with an excellent skill set for helping clients. He is committed to identifying challenges, opportunities, unique ideas and solutions that will improve and grow business for his clients.



# TABLE OF CONTENT

## **PAGE 3-10**      **STORAGE SOLUTIONS**

PG. 3      DURASHELF®

PG. 7      DUNNAGE-RACK™

PG. 9      MODULAR-KART™

## **PAGES 11-18**      **APPLICATION ZONES**

PG. 11      JANITORIAL & CHEMICAL STORAGE

PG. 13      WAREHOUSE/MANUFACTURING

PG. 15      COLD STORAGE

PG. 17      GENERAL STORAGE & OUTDOOR

## **PAGE 19**      **CASE STUDIES**

## **PAGE 21**      **PLANNING & DESIGN SERVICE**

# ABOUT DURASHELF®

Our industrial-grade shelving is the toughest all-plastic high-density polyethylene storage solution in the industry. The entire system is chemically resistant, making it an ideal choice for HAZMAT storage or any other application, corrosive or not.

## DURASHELF® GRID TOP

ALLOWS LIQUIDS TO FLOW THROUGH,  
PROMOTES AIR CIRCULATION,  
& PREVENTS DUST BUILD UP.



### SIZES AVAILABLE

36" x 16"/24"/36"	48" x 24"
66" x 16"/24"/36"	96" x 16"/24"/36"

### SHELF HEIGHTS AVAILABLE

2-SHELF: 27"H	3-SHELF: 51"H	4-SHELF: 75"H
---------------	---------------	---------------

↑  
UPGRADE TO  
**ADJUSTABLE  
SHELVING**

•  
AVAILABLE IN  
16" & 24" DEPTHS

•  
AVAILABLE IN  
3-SHELF & 4-SHELF  
HEIGHTS

•  
Shelves slide  
up and down  
in 4-inch  
increments to  
accommodate  
most any  
storage need.



## DURASHELF® SOLID TOP

IDEAL FOR HIGHER CAPACITY NEEDS  
AND PREVENTING CROSS-PRODUCT  
CONTAMINATION FROM SHELF TO SHELF.

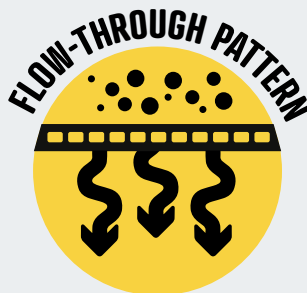


### SIZES AVAILABLE

36" x 24"/36"	48" x 24"
66" x 24"/36"	96" x 24"/36"

### SHELF HEIGHTS AVAILABLE

2-SHELF: 27"H	3-SHELF: 51"H	4-SHELF: 75"H
---------------	---------------	---------------



## RAISED DURASHELF®

6-12" CLEARANCE FROM FLOOR ALLOWS FOR EASY CLEANING UNDER SHELVING. AVAILABLE IN GRID AND SOLID TOP.



### SIZES AVAILABLE

36" x 24"/36"	48" x 24"
66" x 24"/36"	96" x 24"/36"

### SHELF HEIGHTS AVAILABLE

2-SHELF: 30-36"H	3-SHELF: 54-60"H
------------------	------------------

## CONTAINMENT TRAYS

KEEP MATERIALS SEPARATED AND CONFINE SPILLS TO PREVENT DAMAGE TO ITEMS STORED ON LOWER SHELVES OR IN ADJACENT COMPARTMENTS. AVAILABLE IN OSHA DESIGNATED CHEMICAL STORAGE COLOR CODES.



\*Compatible with 24-inch wide Durashelf®

### TRAYS NEEDED BY DURASHELF® SIZE

	2-SHELF	3-SHELF	4-SHELF
36" LENGTHS	2	3	4
66" LENGTHS	3	6	8
96" LENGTHS	4	9	12

### AVAILABLE COLORS

BLACK	BLUE	RED	WHITE	YELLOW
-------	------	-----	-------	--------

# DURASHELF®

SIZES	PART #	PANEL SURFACE	# SHELVES	ADJUSTABLE	CAPACITY*	WEIGHT
36" X 16"	S3616B	GRID	2	-	340 LBS	22 LBS
	S3616X3	GRID	3	AS3616X3	500 LBS	35 LBS
	S3616X4	GRID	4	AS3616X4	675 LBS	48 LBS
36" X 24"	S3624B	GRID	2	-	500 LBS	26 LBS
	ST3624B	SOLID	2	-	660 LBS	31 LBS
	S3624X3	GRID	3	AS3624X3	750 LBS	41 LBS
	ST3624X3	SOLID	3	AST3624X3	990 LBS	49 LBS
	S3624X4	GRID	4	AS3624X4	1000 LBS	56 LBS
	ST3624X4	SOLID	4	AST3624X4	1320 LBS	67 LBS
36" X 36"	S3636B	GRID	2	-	750 LBS	44 LBS
	ST3636B	SOLID	2	-	985 LBS	51 LBS
	S3636X3	GRID	3	-	1125 LBS	70 LBS
	ST3636X3	SOLID	3	-	1475 LBS	81 LBS
	S3636X4	GRID	4	-	1500 LBS	97 LBS
	ST3636X4	SOLID	4	-	1965 LBS	112 LBS
48" X 24"	S4824B	GRID	2	-	690 LBS	35 LBS
	ST4824B	SOLID	2	-	905 LBS	39 LBS
	S4824X3	GRID	3	AS4824X3	1015 LBS	57 LBS
	ST4824X3	SOLID	3	AST4824X3	1330 LBS	63 LBS
	S4824X4	GRID	4	AS4824X4	1375 LBS	78 LBS
	ST4824X4	SOLID	4	AST4824X4	1760 LBS	87 LBS
66" X 16"	S6616B	GRID	2	-	615 LBS	36 LBS
	S6616X3	GRID	3	AS6616X3	925 LBS	58 LBS
	S6616X4	GRID	4	ASS6616X4	1235 LBS	80 LBS
66" X 24"	S6624B	GRID	2	-	925 LBS	35 LBS
	ST6624B	SOLID	2	-	1210 LBS	39 LBS
	S6624X3	GRID	3	AS6624X3	1390 LBS	57 LBS
	ST6624X3	SOLID	3	AST6624X3	1820 LBS	63 LBS
	S6624X4	GRID	4	AS6624X4	1850 LBS	78 LBS
	ST6624X4	SOLID	4	AST6624X4	2420 LBS	87 LBS

SIZES	PART #	PANEL SURFACE	# SHELVES	ADJUSTABLE	CAPACITY*	WEIGHT
66" X 36"	S6636B	GRID	2	-	1375 LBS	74 LBS
	ST6636B	SOLID	2	-	1800 LBS	85 LBS
	S6636X3	GRID	3	-	2065 LBS	118 LBS
	ST6636X3	SOLID	3	-	2705 LBS	135 LBS
	S6636X4	GRID	4	-	2750 LBS	163 LBS
	ST6636X4	SOLID	4	-	3600 LBS	186 LBS
96" X 16"	S9616B	GRID	2	-	900 LBS	49 LBS
	S9616X3	GRID	3	AS9616X3	1350 LBS	78 LBS
	S9616X4	GRID	4	ASS9616X4	1800 LBS	107 LBS
96" X 24"	S9624B	GRID	2	-	1350 LBS	65 LBS
	ST9624B	SOLID	2	-	1770 LBS	76 LBS
	S9624X3	GRID	3	AS9624X3	2025 LBS	102 LBS
	ST9624X3	SOLID	3	AST9624X3	2650 LBS	119 LBS
	S9624X4	GRID	4	AS9624X4	2700 LBS	139 LBS
	ST9624X4	SOLID	4	AST9624X4	3540 LBS	161 LBS
96" X 36"	S9636B	GRID	2	-	2015 LBS	103 LBS
	ST9636B	SOLID	2	-	2640 LBS	127 LBS
	S9636X3	GRID	3	-	3025 LBS	165 LBS
	ST9636X3	SOLID	3	-	3960 LBS	201 LBS
	S9636X4	GRID	4	-	4030 LBS	226 LBS
	ST9636X4	SOLID	4	-	5280 LBS	275 LBS

## CONTAINMENT TRAYS

SIZES	PART #	COLOR	STORAGE TYPE
30" X 24"	CT300124	BLACK	GENERAL STORAGE
	CTR300124	RED	FLAMMABLES
	CTB300124	BLUE	HEALTH HAZARDS/TOXICS
	CTY300124	YELLOW	REACTIVES/OXIDIZERS
	CTW300124	WHITE	CONTACT HAZARDS

# ABOUT DUNNAGE-RACK™

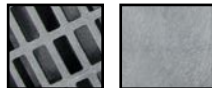
Meet both ergonomic and material handling goals at once with Dunnage-Rack™. Made of high-density polyethylene, our racks provide heavy-duty stability and durability for large bulk items.

## DUNNAGE-RACK™

ALLOWS LIQUIDS TO FLOW THROUGH,  
PROMOTES AIR CIRCULATION,  
& PREVENTS DUST BUILD UP.



Grid & Solid Top  
Available



### SIZES AVAILABLE

36" x 24"/36"	48" x 24"
66" x 24"/36"	96" x 24"/36"

### CAPACITY LIMITS

GRID TOP: 500-2000 LBS	SOLID TOP: 700-2700 LBS
------------------------	-------------------------

## MOBILE DUNNAGE-RACK™

THE LONG-TERM, LOW-COST SOLUTION THAT WILL INCREASE YOUR  
OPERATIONAL EFFICIENCIES. A HEAVY-DUTY REINFORCED STEEL CASTER  
CHASSIS ACCOMMODATES UP TO 2,000\* POUNDS OF CAPACITY.



Solid Top Only



### SIZES AVAILABLE

36" x 24"/36"	48" x 24"
66" x 24"/36"	96" x 24"/36"

### CAPACITY LIMITS

36"/48": 1,000 LBS	66": 1,500 LBS	96": 2,000 LBS
--------------------	----------------	----------------

\*Capacity weight limits based on panel size and assume even distribution of materials.



SIZES	PART #	DESCRIPTION	CAPACITY*	WEIGHT
36" X 24"	D3624	36" X 24" GRID TOP DUNNAGE-RACK™	500 LBS	13 LBS
	DT3624	36" X 24" SOLID TOP DUNNAGE-RACK™	700 LBS	17 LBS
	PT2436	36" X 24" MOBILE DUNNAGE-RACK™	1000 LBS	43 LBS
36" X 36"	D3636	36" X 36" GRID TOP DUNNAGE-RACK™	750 LBS	22 LBS
	DT3636	36" X 36" SOLID TOP DUNNAGE-RACK™	1000 LBS	26 LBS
	PT3636	36" X 36" MOBILE DUNNAGE-RACK™	1000 LBS	64 LBS
48" X 24"	D4824	48" X 24" GRID TOP DUNNAGE-RACK™	700 LBS	19 LBS
	DT4824	48" X 24" SOLID TOP DUNNAGE-RACK™	900 LBS	21 LBS
	PT2448	48" X 24" MOBILE DUNNAGE-RACK™	1000 LBS	58 LBS
66" X 24"	D6624	66" X 24" GRID TOP DUNNAGE-RACK™	1000 LBS	23 LBS
	DT6624	66" X 24" SOLID TOP DUNNAGE-RACK™	1400 LBS	28 LBS
	PT2466	66" X 24" MOBILE DUNNAGE-RACK™	1500 LBS	71 LBS
66" X 36"	D6636	66" X 36" GRID TOP DUNNAGE-RACK™	1500 LBS	37 LBS
	DT6636	66" X 36" SOLID TOP DUNNAGE-RACK™	1900 LBS	49 LBS
	PT3666	66" X 36" MOBILE DUNNAGE-RACK™	1500 LBS	103 LBS
96" X 24"	D9624	96" X 24" GRID TOP DUNNAGE-RACK™	1400 LBS	34 LBS
	DT9624	96" X 24" SOLID TOP DUNNAGE-RACK™	1800 LBS	41 LBS
	PT2496	96" X 24" MOBILE DUNNAGE-RACK™	2000 LBS	98 LBS
96" X 36"	D9636	96" X 36" GRID TOP DUNNAGE-RACK™	2000 LBS	53 LBS
	DT9636	96" X 36" SOLID TOP DUNNAGE-RACK™	2700 LBS	64 LBS
	PT3696	96" X 36" MOBILE DUNNAGE-RACK™	2000 LBS	147 LBS

\*Published weight capacities of all products assume even distribution of materials across all panels.



# ABOUT MODULAR-KART™

Put workers on the move by adding a few of our Modular-Karts™ to your operation. Ideally suited for pick-and-pull warehouses, they're strong enough to handle heavy loads and light enough for workers to easily manage.

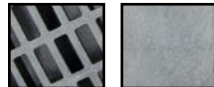
## MODULAR-KART™ STARTER KIT

### KIT INCLUDES:

- 1 BASE PANEL • 1 TOP PANEL • 4-8 LEGS
- 4-8 CASTER WHEELS • 4-8 INTERNAL STACKING COLLORS



Grid & Solid Top  
Available



### SIZES AVAILABLE

36" x 24"	48" x 24"
66" x 24"	96" x 24"

## MODULAR-KART™ ADD-ON KITS

### KIT INCLUDES:

- 1 TOP PANEL • 4-8 LEGS
- 4-8 INTERNAL STACKING COLLORS



### SIZES AVAILABLE

36" x 24"	48" x 24"
66" x 24"	96" x 24"

SIZES	PART #	DESCRIPTION	CAPACITY*	WEIGHT
36" X 24"	K3624B	36" X 24" GRID TOP MODULAR-KART™	600 LBS	32 LBS
	K3624A	36" X 24" GRID TOP MODULAR-KART™ ADD-ON KIT	-	16 LBS
	KT3624B	36" X 24" SOLID TOP MODULAR-KART™	600 LBS	36 LBS
	KT3624A	36" X 24" SOLID TOP MODULAR-KART™ ADD-ON KIT	-	18 LBS
48" X 24"	K4824B	48" X 24" GRID TOP MODULAR-KART™	750 LBS	43 LBS
	K4824A	48" X 24" GRID TOP MODULAR-KART™ ADD-ON KIT	-	22 LBS
	KT4824B	48" X 24" SOLID TOP MODULAR-KART™	750 LBS	47 LBS
	KT4824A	48" X 24" SOLID TOP MODULAR-KART™ ADD-ON KIT	-	24 LBS
66" X 24"	K6624B	66" X 24" GRID TOP MODULAR-KART™	900 LBS	52 LBS
	K6624A	66" X 24" GRID TOP MODULAR-KART™ ADD-ON KIT	-	26 LBS
	KT6624B	66" X 24" SOLID TOP MODULAR-KART™	900 LBS	61 LBS
	KT6624A	66" X 24" SOLID TOP MODULAR-KART™ ADD-ON KIT	-	31 LBS
96" X 24"	K9624B	96" X 24" GRID TOP MODULAR-KART™	1200 LBS	75 LBS
	K9624A	96" X 24" GRID TOP MODULAR-KART™ ADD-ON KIT	-	38 LBS
	KT9624B	96" X 24" SOLID TOP MODULAR-KART™	1200 LBS	86 LBS
	KT9624A	96" X 24" SOLID TOP MODULAR-KART™ ADD-ON KIT	-	43 LBS

\*Weight capacities shown are maximum weight for 2, 3, or 4 shelf units.



# ZONE 1: JANITORIAL & CHEMICAL STORAGE

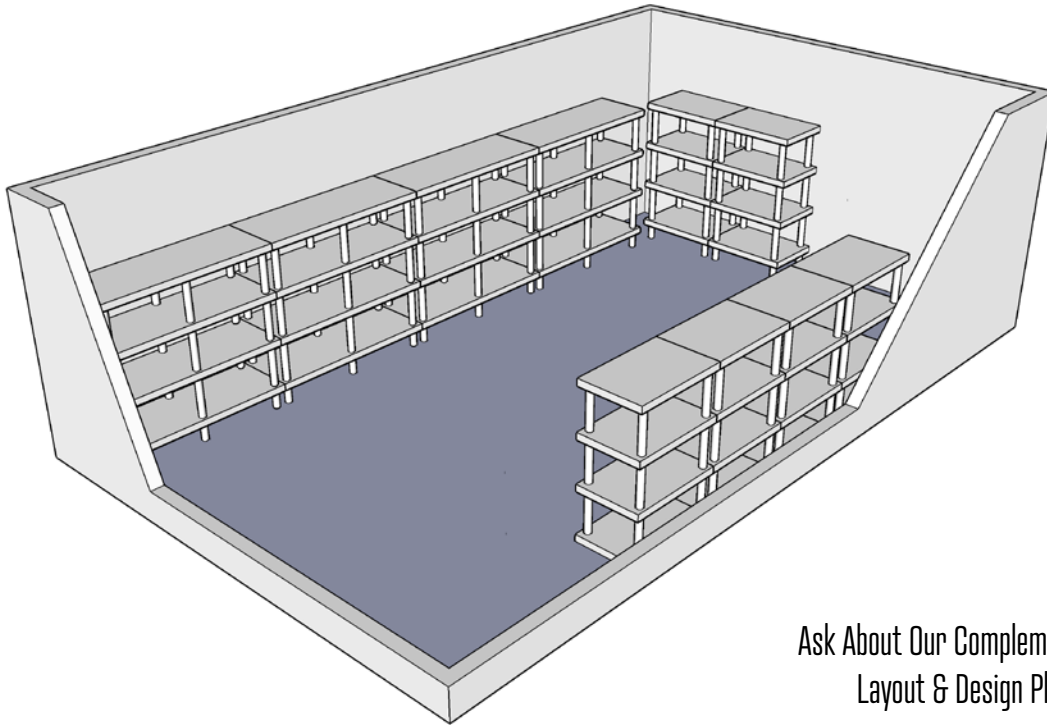
**BEFORE**



**AFTER**



## CHEMICAL STORAGE ROOM



Ask About Our Complementary  
Layout & Design Planning

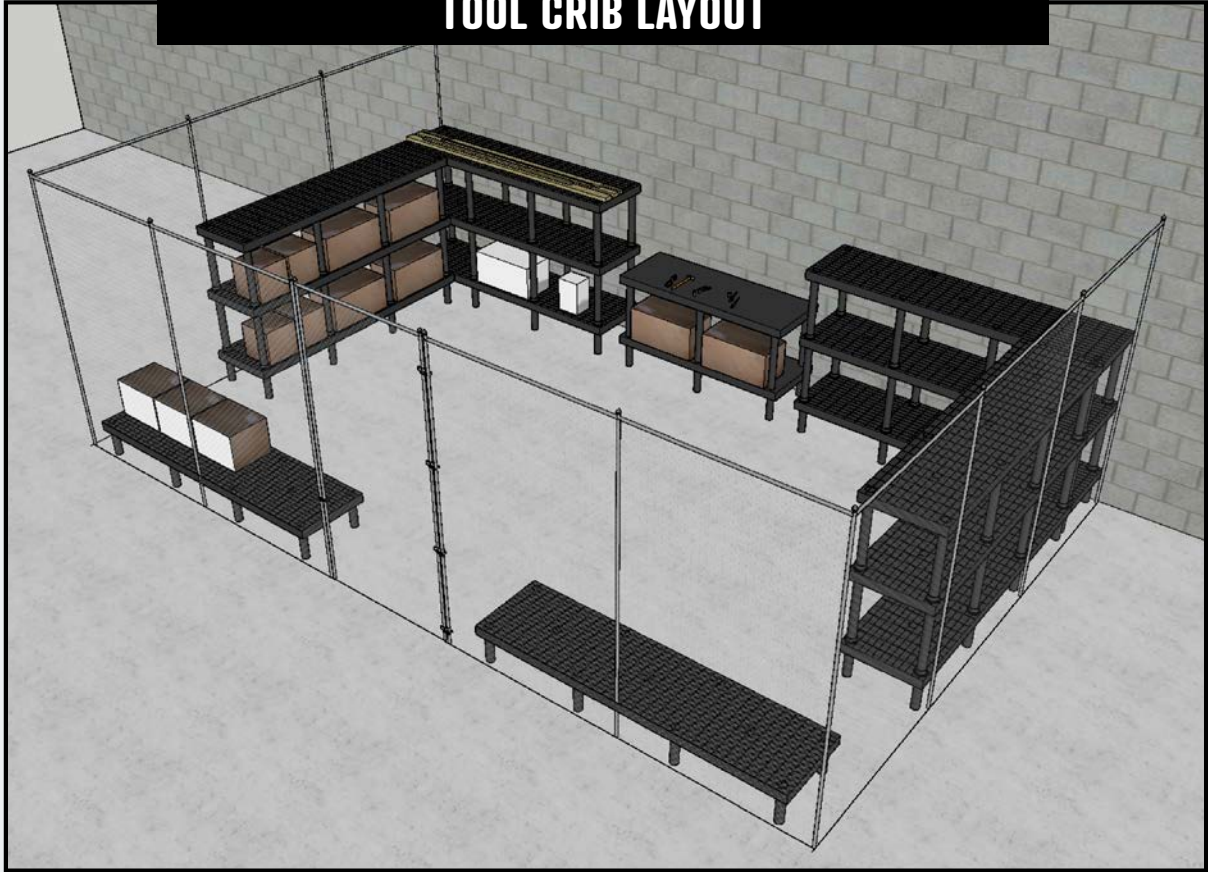
### ENDLESS VERSATILITY

- UNIQUE LOCKING SYSTEM PROVIDES FLEXIBILITY TO BUILD 2, 3 OR 4 SHELF SYSTEMS IN A VARIETY OF SIZES
- MODULAR SYSTEM ADAPTS TO FITS MOST ANY SIZE & SPACE
- CONTAINMENT TRAYS CONFINE SPILLS TO PREVENT DAMAGE

# ZONE 2: WAREHOUSE & MANUFACTURING



## TOOL CRIB LAYOUT



### ERGONOMIC FIT & PRODUCTION EFFICIENCY

- LARGEST PLASTIC STORAGE RACKS ON THE MARKET; EASY SET-UP, PORTABLE, DURABLE, & VERSATILE
- MAXIMIZE ERGONOMIC FIT & PRODUCTION EFFICIENCY IN SHIPPING, PACKAGING AND REPLENISHMENT AREAS

## ZONE 3: COLD STORAGE





## FREEZER STORAGE



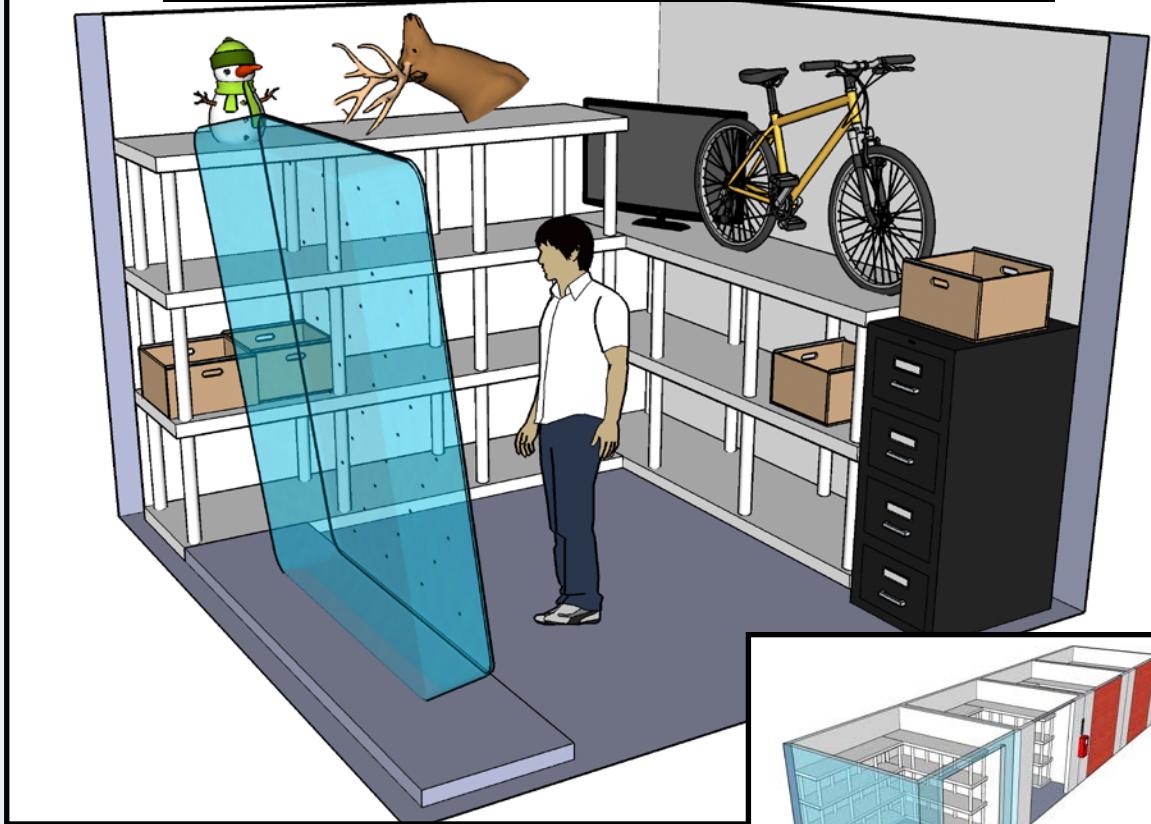
### STORAGE FOR HEAVY BULK GOODS, LIQUIDS, AND DRY GOODS

- MADE FROM UV-STABILIZED POLYETHYLENE TO PROVIDE A HEAVY-DUTY BASE FOR YOUR PRODUCTS, REMOVING THE RISK OF BENDING AND RUSTING THAT COMES WITH ALUMINUM RACKS.
- SUITABLE FOR BOTH DRY AND COLD STORAGE AREAS
- SLOTTED TOP ALLOWS OPTIMAL AIR CIRCULATION SO THAT YOUR INGREDIENTS MATCH THE TEMPERATURE OF THE ROOM THEY'RE PLACED IN.

## **ZONE 4: OUTDOOR & GENERAL STORAGE**



## STORAGE LOCKER



### HEAVY DUTY & DURABLE

- UV RESISTANT - PERFECT FOR INDOORS OR OUTDOORS STORAGE
- WEIGHT CAPACITY OF UP TO 5,280 POUNDS
- ORGANIZE AND DEFINE SPACE

# SUCCESS STORY: **BLANK PARK ZOO**



## **CHALLENGE**

The Blank Park Zoo in Des Moines, IA has a room dedicated to housing filters that process the water for their large fish aquariums. The original steel support shelving being used was deteriorating and rusting due to the extremely wet conditions and exposure to chemicals used in the water filtration system. A new cost-effective shelving solution that is able to hold up to chemical exposure and constant wetness was needed.

## **SOLUTION**

After assessing site conditions, SPC suggested a high capacity, two-level DuraShelf® solution. This solution was inexpensive, easy-to assemble, able to provide high weight capacity, and built to last.

## **RESULTS**

The DuraShelf® continues to perform perfectly three years later, even in the harsh wet and corrosive environment. The lower shelving platform also provides a dry, clean and organized space for storing extra materials and equipment. DuraShelf® used at the Blank Park Zoo will out last the life of the aquarium and beyond.



# SUCCESS STORY: **BEL BRANDS USA**



## **CHALLENGE**

Bel Brands USA, a maker and distributor of gourmet cheeses was building a new facility in Brookings, South Dakota. To help complete the amenities at the new facility, Bel Brands USA needed to install new lockers in the men's and women's locker rooms while maintaining a cleaning space beneath the lockers.

## **SOLUTION**

SPC produced detailed drawings and confirmation of dimensions. Dunnage-Rack™ had the weight capacity to help support the lockers while providing a raised, easy to clean surface below the lockers.

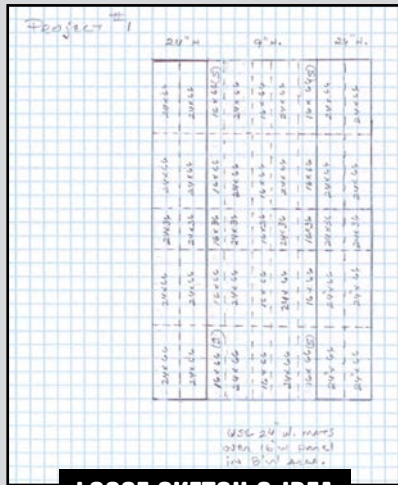
## **RESULTS**

Dunnage-Rack™ was a win for Bel Brands USA. Mark Felland, a sales representative at Haldeman-Homme, says, "The end user is quite pleased" Felland appreciated SPC's help in finding a solution for his client and looks forward to a continued successful relationship with SPC.

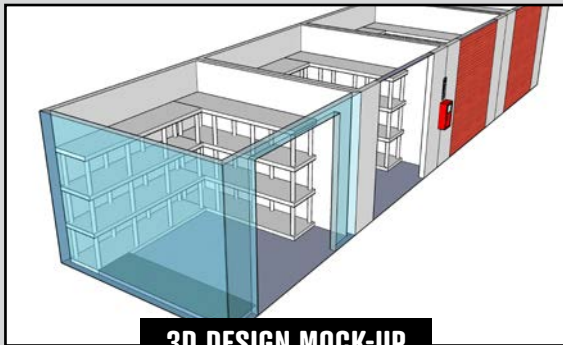


# PLANNING & DESIGN SERVICE

The SPC Industrial™ team works to design and develop custom solutions to fit a multitude of industrial spaces and applications. Our free planning and design services provide recommendations and solutions to manufacturers that are flexible and improve efficiency.



**LOOSE SKETCH & IDEA**



**3D DESIGN MOCK-UP**



ASK ABOUT OUR  
**COMPLEMENTARY  
LAYOUT & DESIGN**

# NOTES

---

---

---

---

---

---

---

---

---

---

---

---

---

---

---

---

---

---

---

---

---

---

---

---

---

---

---

---

---

---

## CONTACT US

**CJ** JENSEN

National Account Manager

 **810.347.3634**

 **800.523.6899** EXT. 212

 **CJENSEN@SPCINDUSTRIAL.COM**